

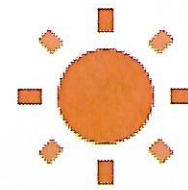


CHOLUTECA

WELCOME TO HONDURAS

Honduras is in Central America, bordered by Guatemala, El Salvador and Nicaragua. The Caribbean Sea is to the north. On the south, it shares a small stretch of coastline with the Pacific Ocean. Several islands can be found along both coastlines.

Honduras is home to beautiful natural surroundings, tropical forests, mountains and ancient Mayan ruins. Spanish is the official language.



TROPICAL
CLIMATE

WITH LITTLE
RAINFALL
IN WINTER

28°C

YOUR SPONSORED CHILD'S COMMUNITY

Choluteca is located in the southern part of Honduras. It is one of the most historical areas of the country. Residents are proud to preserve Honduran folklore through traditional dances, stories and clothing. Many people harvest shrimp and fish, and grow sugar, melon, sweet potato and okra.

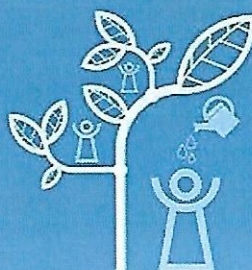
Families in Choluteca live in houses made of sun-dried bricks with tile roofs. Most lack basic services, like safe drinking water.

Life is difficult for children in Choluteca. Poverty means children often forgo their education in order to work and contribute to the family income. Girls face many challenges, from sexual violence to early marriage and pregnancy. There is little access to economic opportunities. Young people often drop-out of school to search for jobs in other parts of the country or abroad.



WE STARTED WORKING IN
CHOLUTECA IN

1995



POPULATION

152,219